



# X-ADV

TAKE A RIDE ON  
THE WILD SIDE



*\*Product shown in the picture may vary from actual product available in the market.*



# X-ADV

**TAKE A RIDE ON  
THE WILD SIDE**

The Honda X-ADV is built to break through, not to follow. With its sharp SUV-inspired design, cutting-edge tech, and enhanced comfort, it's made to dominate any terrain. Whether navigating the urban jungle or hitting the open trail, this ride brings power and precision to every adventure. So, when are you taking a ride on the wild side?

\*Product shown in the picture may vary from actual product available in the market.

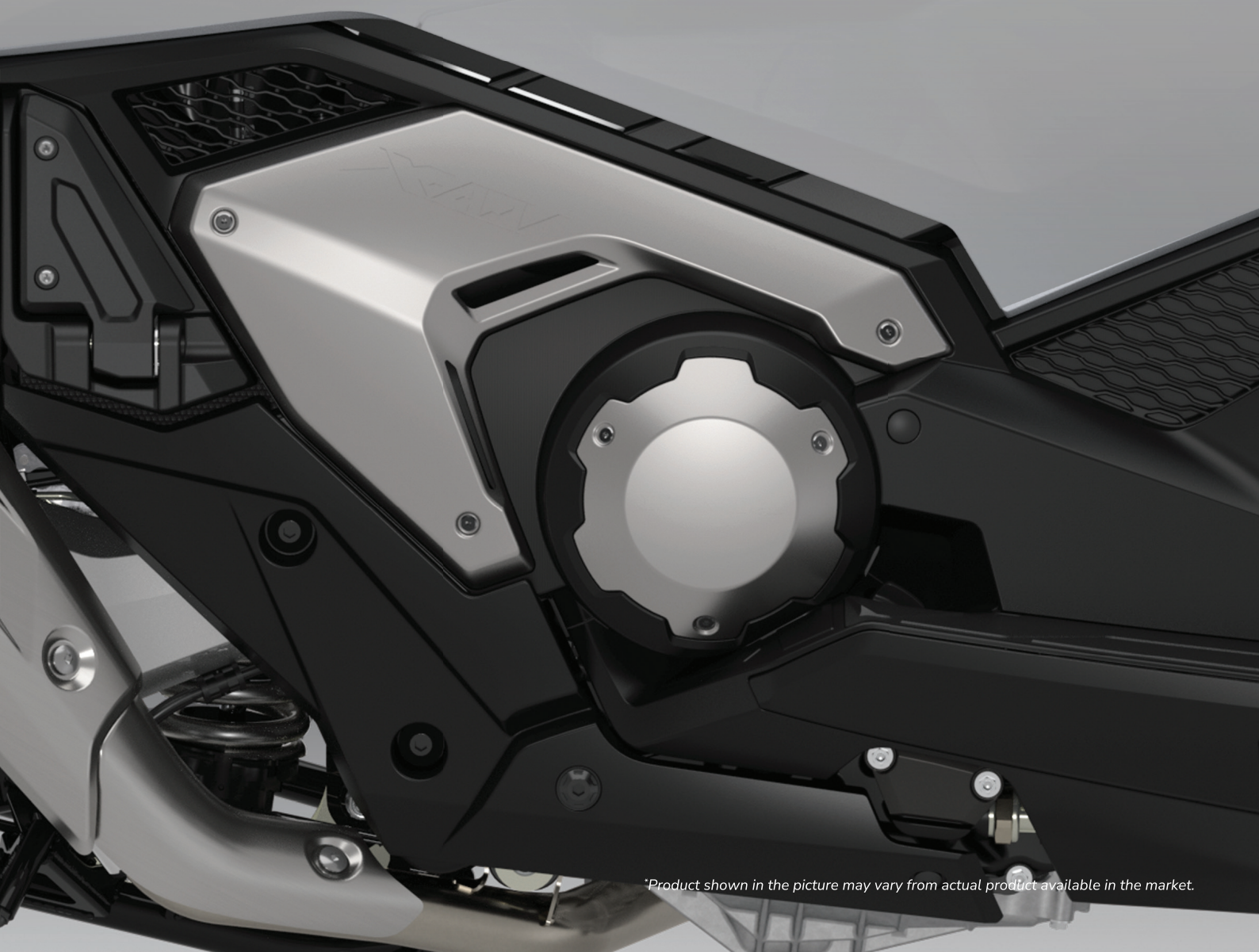
# FIERCE BY DESIGN

Bold at first glance, smarter at every angle. Honda X-ADV's new front fairing brings SUV-like confidence, shaped for both style and purpose. While the new windscreen adjusts to the wind effortlessly even from a seated position with just one hand. Made with eco-friendly Durabio™, a bio-based polycarbonate resin, both elements are as responsible as they are refined.



# UNLEASH WILD PERFORMANCE

Built for the city. Born for the escape. The 745 cc twin-cylinder engine delivers that perfect mix of punchy power when you need it and smooth torque when you cruise. Whether it's the weekday rush or a weekend trail, it's always ready to go the distance.



# ENGINEERED FOR EXTREME

Rain. Gravel. Tight turns. The newly optimized Honda Selectable Torque Control (HSTC) reads the road and responds in real time. And with a smoother Dual Clutch Transmission (DCT), refined through Throttle by Wire, the starts, stops, and slow rolls feel more natural than ever.



*\*Product shown in the picture may vary from actual product available in the market.*

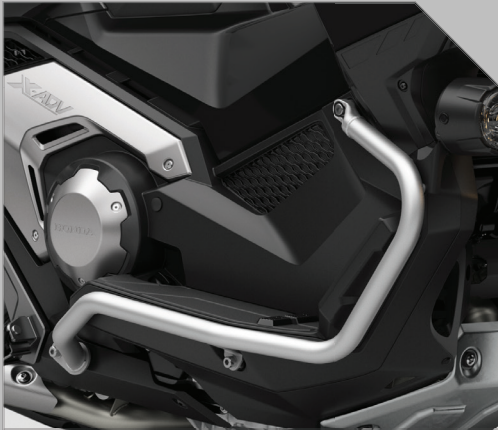
# TECH AT YOUR COMMAND

The new 5-inch TFT display stays sharp in sunlight and connects effortlessly with Honda RoadSync so your maps, calls, and music are always within reach. On the other hand, the twin-LED projector headlights use Hidden Eye Technology that don't just light the road but own it, with sleek Daytime Running Lights (DRLs) and hidden indicators built in.



# ACCESSORIZE YOUR RIDE, YOUR WAY

---



**SIDE PIPE**



**KNUCKLE GUARD  
EXTENSION**



**RIDER  
FOOT PEG**



**TOP BOX - MANUAL**



**PANNIER CASE**



**PARKING LEVER AND COVER**



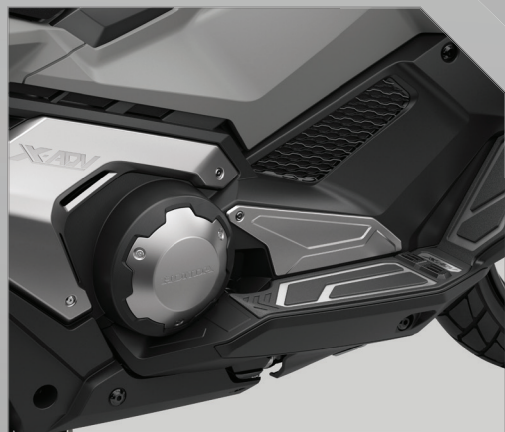
**LEG DEFLECTOR**



**FRONT FOG LIGHT**



**HANDLE HOLDER UP**



**FLOOR PANEL AND LATERAL COVER**



**TOP BOX**



**COMFORT SEAT**



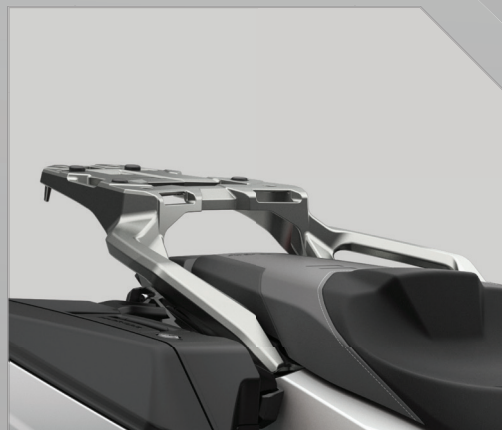
**CONSOLE BAG**



**GRIP HEATER**



**ACC SOCKET**



**REAR CARRIER**

## COLOURS



GRAPHITE BLACK

PEARL GLARE WHITE

## SPECIFICATIONS

### ENGINE

Engine Type	4-Stroke, 8-Valves Parallel-Twin SOHC, Liquid-Cooled
Bore x Stroke	77 x 80
Compression Ratio	10.7 ± 0.2
Displacement	745 cc
Net Power	43.1 kW @6750 rpm
Maximum Torque	69 N-m @4750 rpm
No. of Gears	6

### DIMENSIONS AND WEIGHT

Length x Width x Height	2215 mm x 940 mm x 1370 mm
Seat Height	820 mm
Wheelbase	1590 mm
Ground Clearance	165 mm
Kerb Weight	237 kg
Fuel Tank Capacity	13.2 L
Frame Type	Diamond Tubular Steel

### WHEELS, SUSPENSION AND BRAKES

Tyre Size (Front)	120/70R - 17M/C 58H
Tyre Size (Rear)	160/60R - 15M/C 67H
Brake Type (Front)	Disc - 296 mm
Brake Type (Rear)	Disc - 240 mm
Calliper Front	4 Piston
Calliper Rear	1 Piston
Front Suspension	SFF-CA-USD Forks
Rear Suspension	Monoshock with Pro-Link, Adjustable Spring Preload


### ELECTRICALS

Battery	12 V, 11.6 Ah
Headlight	LED
Tail Lamp	LED
Winkers	LED

***Honda BigWing***  
—EXCITES THE WORLD—

**Bigwing Bengaluru North**  
No 5 Rmv Extension Bellary Road  
Bengaluru  
Tel: 8105570624  
Mob: 8792922287

**Honda Motorcycle and Scooter India Pvt. Ltd.,**  
**Registered Office:** Plot No. 1, Sector - 03, IMT Manesar, Distt. Gurugram (Haryana) - 122052, India  
**Customer Care:** [customercare@honda.hmsi.in](mailto:customercare@honda.hmsi.in) **Website:** [www.hondabigwing.in](http://www.hondabigwing.in)

Follow us on:   Honda BigWing India |   BigWingIndia

All brand/logo are registered trademark of their respective brand/company.